

TRUCK, UTILITY, 1/4 TON GS LANDROVER, SERIES 2 AND 2A

(FITTED FOR RIFLE, 106 MM)

106 MM RIFLE SECURING BRACKET

MODIFICATION INSTRUCTION

REFERENCE:- AC in WM No 23046/4.

SUMMARY

1. This instruction details the welding of a support bar on the frame of the hinged securing bracket for the rifle barrel. It is to prevent the bracket from falling on to, and damaging the instrument panel when the rifle is taken out of the bracket, and authorises the fitting of a brush guard to vehicles which have not been fitted.

Estimated manhours to perform: 3.0

2. Priority: Group 2

3. Vehicles affected:

Subject vehicles.

4. Items affected:

Rifle barrel stowage clamp

5. Action required: By RAEME workshops authorised to carry out field repair in accordance with WKSP A 850.

6. Stores required: (Obtainable through normal channels).

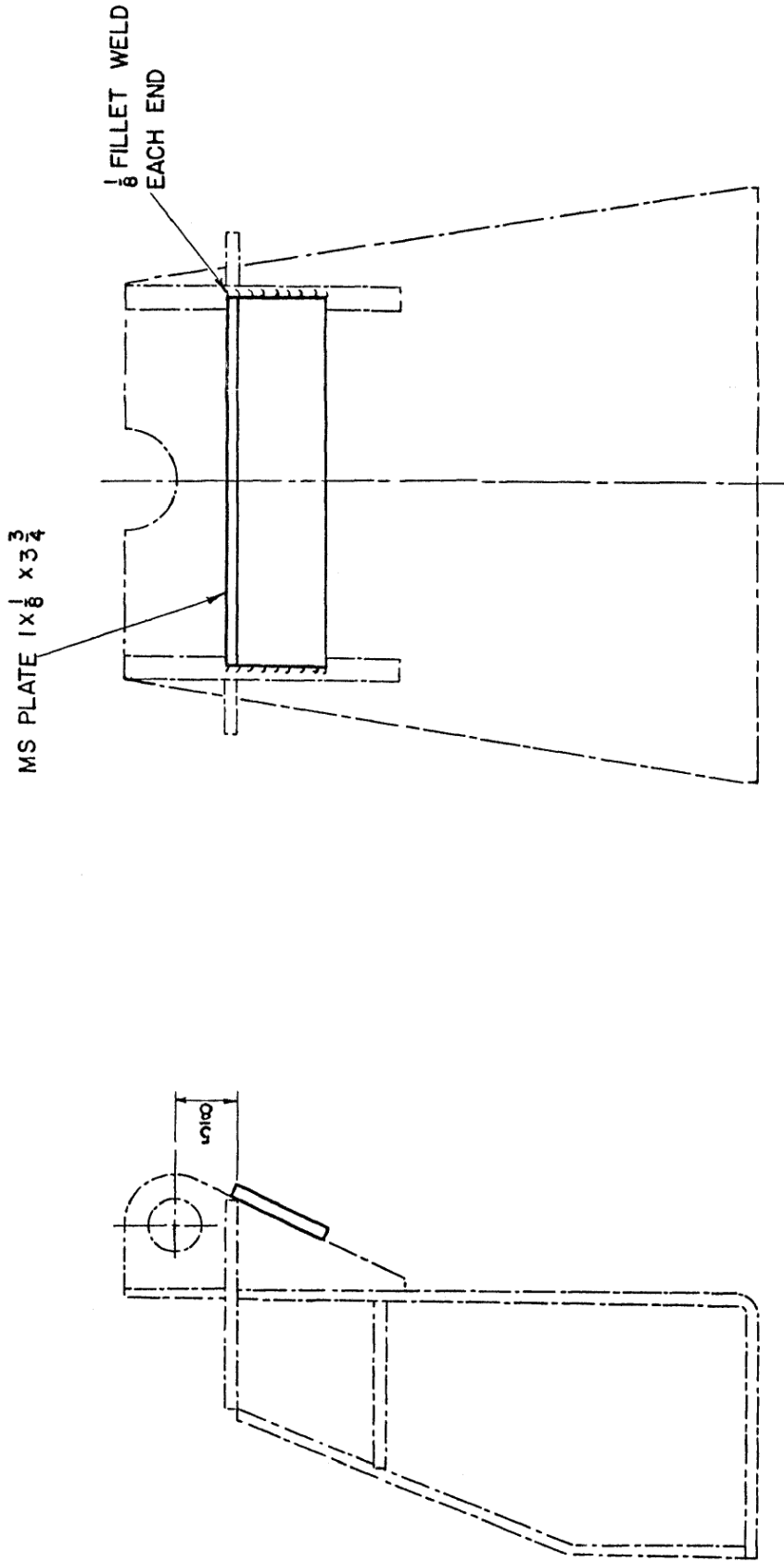
Stock No	Designation	Qty per Veh
9515-66-011-5894	STEEL SHEET, carbon, hot rolled, mild 1 in by 1/8 in by 4 in	1

DETAIL

7.
 - a. Manufacture the bar as detailed in fig 1.
 - b. Scrape the paint from the front of the barrel clamp support frame.
 - c. Weld the MS bar to the cleaned surface of the frame as shown in fig 1.
 - d. Weld in accordance with WKSP B 010.
 - e. Clean the weld and paint in accordance with WKSP B 700.

8. A brush guard is to be fitted to the front bumper bar as detailed in VEH G 017-6.

9. On completion of this modification, the numeral "7" on the modification record plate is to be defaced in accordance with WKSP A 851.



DIMENSIONS ARE IN INCHES

FIG 1 - CLAMP SUPPORT BAR